

Buy **CNC turned & milled parts** **ONLINE**



Centralised
CNC Programming
at
RFQ
stage itself
for
Best Price

QUALITY SYSTEMS & PRODUCT LIABILITY

ISO 9000

Quality standards followed for Testing and Measurements

PPAP & APQP

Documentations submitted for initial samples

CMM

Measurements and **NABL** Accredited Certificates are accompanies

6 ezee steps to buy your CNC Turned Parts



LOGIN



PROVIDE PART DETAILS



GET AN INSTANT QUOTE



UPLOAD DRAWING & PLACE ORDER



TRACK RFQ & ORDER STATUS

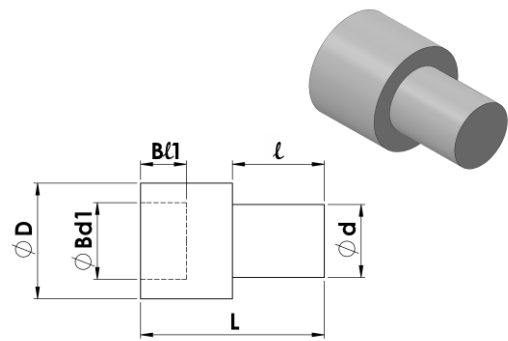


PAY & TAKE DELIVERY ON TIME

Online procurement of CNC machined parts are now made easy ◀



RFQ EXAMPLE



Material	<input type="text" value="Aluminium"/>
Grade	<input type="text" value="HE 30"/>
Unit of measurement	<input type="text" value="Millimeter"/>
Quantity	<input type="text" value="250"/> <input type="button" value="Units"/>

Major Diameter	<input type="text" value="D"/>
Total Length	<input type="text" value="L"/>

No. of step Turning	<input type="text" value="1"/>
Step Turning 1 Diameter	<input type="text" value="d"/>
Step Turning Length	<input type="text" value="l"/>

Country to be shipped	<input type="text" value="UK"/>
Delivery Date	<input type="text" value="30.03.2017"/>
Delivery Terms	<input type="text" value="DP"/>
Freight (Air /Sea)	<input type="text" value="Air"/>

Instant Unit Price

Upload drawing

WHY we do this?

- Quick Purchasing Decision
- Reduce procurement Operating Cost
- Scientific Costing and Faster Delivery

HOW we do this?

- Instant Quote software
- Cloud based Inventory page
- More than 100 CNC machines
- Quality & Supply engineers for every order
- World wide Logistic Network

WHAT we do?

- CNC turned & milled parts
- Right part at Right Price and Right Time
- Keep the Intellectual Property Confidential
- Quality certified parts with NABL Accredited Certificates

EZEE MACHINING ONLINE SERVICES PVT LTD

G2, Aswameda Apartments, 119, Velachery Main Road, Guindy, Chennai - 600 032, INDIA

+91 9884006898 / 044 42118690

info@ezeemachining.com

www.ezeemachining.com